

Farm to Institution in SW Colorado: Healthy Foodsheds, Healthy Producers, Healthy People

Jim Dyer

Healthy Community Food Systems

www.HCFS.org

St Louis SARE Conference, April 2018



HEALTHY COMMUNITY FOOD SYSTEMS



*Healthy Land, Healthy Food,
Healthy People*

Producer Support — Guiding Principles

1. Our local sustainable producers—established and beginning farmers—need our support in a) the marketplace, b) the community, and c) in local/state/federal policies.
2. We must articulate the need for viable alternatives to unsustainable industrial foods for health, social, and environmental reasons.
1. Fair prices for producers and affordable prices for consumers is the responsibility of our society, not producers alone.

Farmers Markets



Farm to School & Preschool



Farm to Institution in SW Colorado

- 1) Farm to Institution (FTI) offers solid opportunities for producers of various scales.

Institutional Opportunities

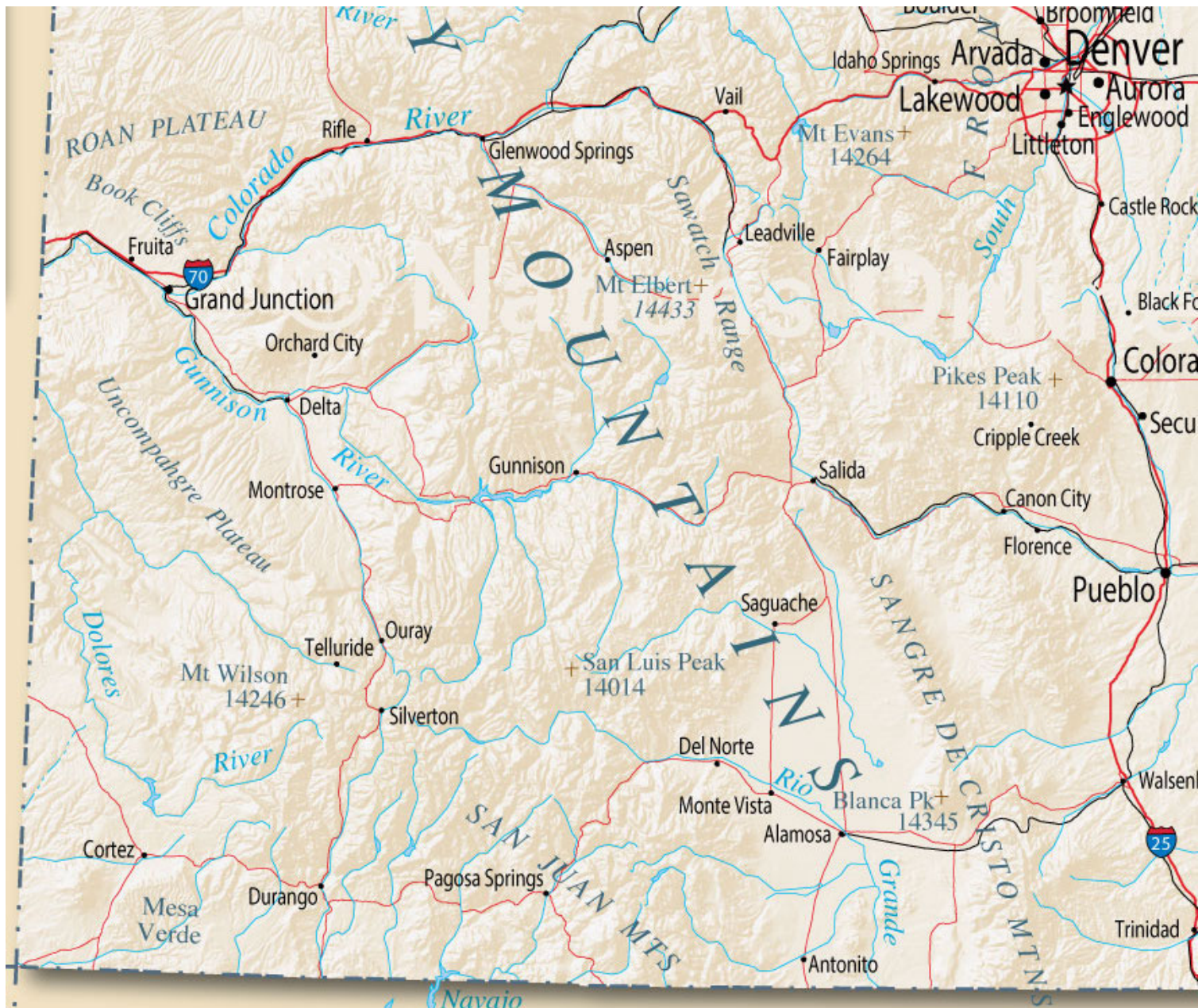
- Schools
- Preschools
- Colleges
- Hospitals
- Senior Care
- Prisons/Jails
- Workplace Cafeterias
- (Rural Restaurants & Groceries)
- and...

Institutional Gardens

- **Can raise awareness among staff, clients, & the public of:**
 - the value of healthy foods, whole foods, sustainable foods
 - the need to reward producers' hard work with fair prices
- **For greatest impact:**
 - highly visible to workers and the public
 - signage that relates the food grown to the institution's mission
 - linked to any café, cafeteria, or restaurant at the site

Farm to Institution in SW Colorado

- 1) Farm to Institution (FTI) offers solid opportunities for producers of various scales.
- 2) FTI can create a critical mass of demand to support distribution to smaller rural communities.



Farm to Institution in SW Colorado

- 1) Farm to Institution (FTI) offers solid opportunities for producers of various scales.
- 2) FTI can create a critical mass of demand to support distribution to smaller rural communities.
- 3) Sustainability of production practices, producer viability, and of purchasing are the keys to a better future.

Sustainability Attributes

- **Good Food (Kellogg):** Healthy, local, green, fair, affordable
- **Real Food Challenge** for colleges: local/community-based, ecologically sound, fair, humane
- **Good Food Purchasing Project:** Local economies, valued workforce, environmental sustainability, nutrition, animal welfare

The Pursuit of Sustainability

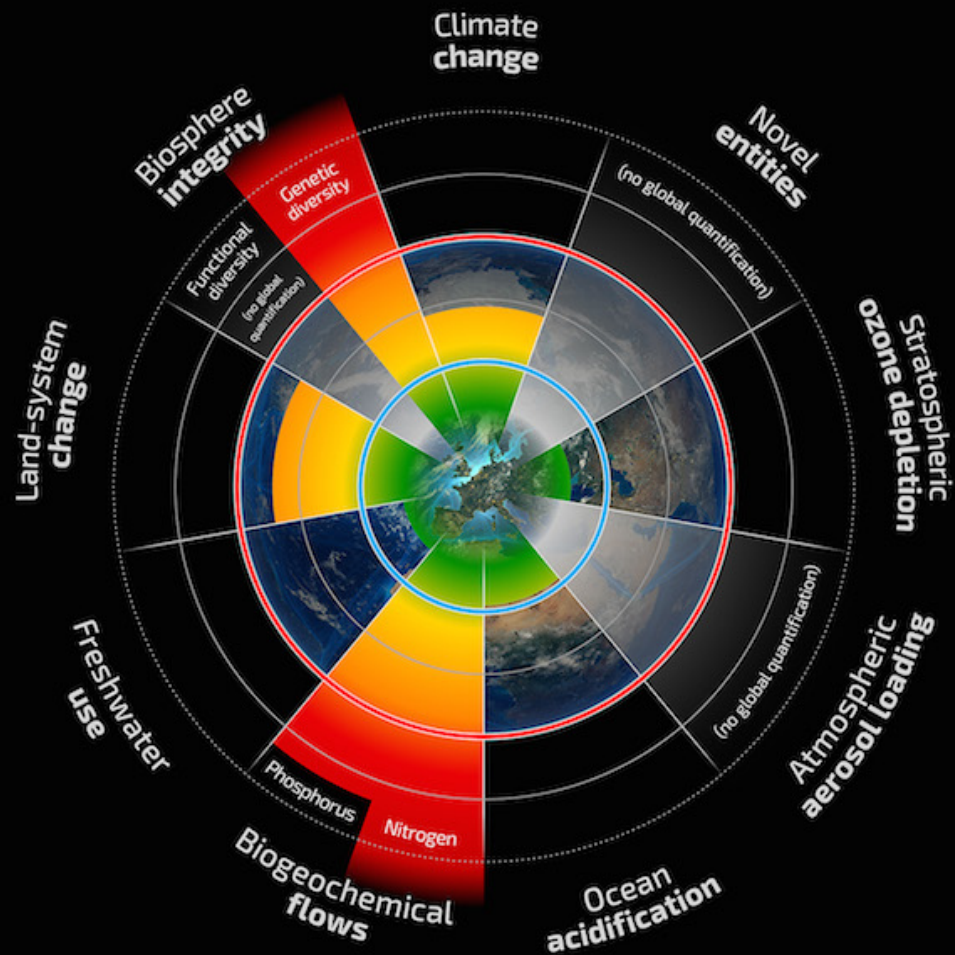
Doing the right things and doing them fast enough

System improvement versus system change

Evolution versus revolution

Planetary Boundaries

A safe operating space for humanity



The Pursuit of Sustainability

Doing the right things and doing them fast enough

System improvement versus system change

Evolution versus revolution

For us, irreversibility calls for dramatic and urgent action on climate change and biodiversity in agriculture and beyond.













Hailstones, Marvel, CO 22 Sept 2013

Raising Awareness and Engagement on Climate & Biodiversity

- **Gardening — widespread & in all settings**
- **Observing & monitoring foodshed health**

What if kids saw food gardens wherever they went?

Schools – Backyards – Preschools



AND

Libraries – Hospitals – Government Offices
Churches – Granges – Restaurants & Hotels
Museums – Nature Centers – Senior Centers

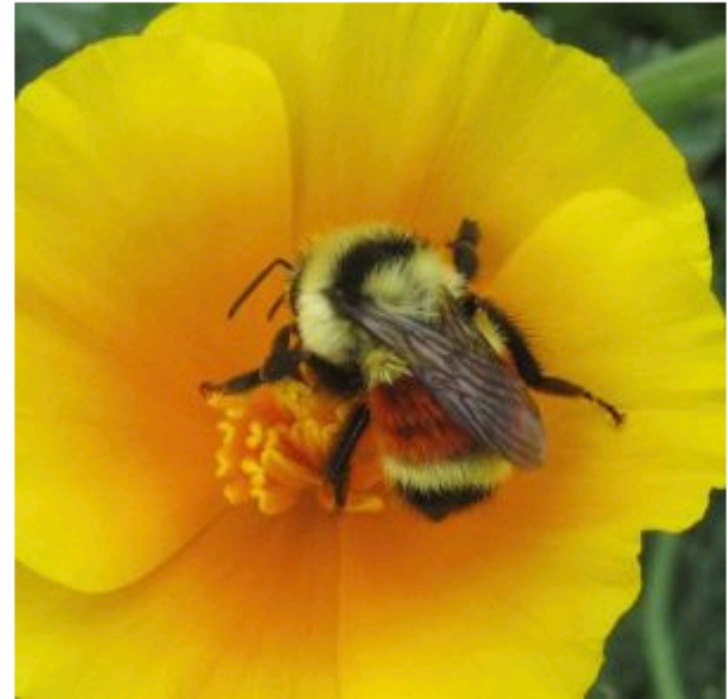
www.HCFS.org

Monitoring Foodshed Health



Bumblebees

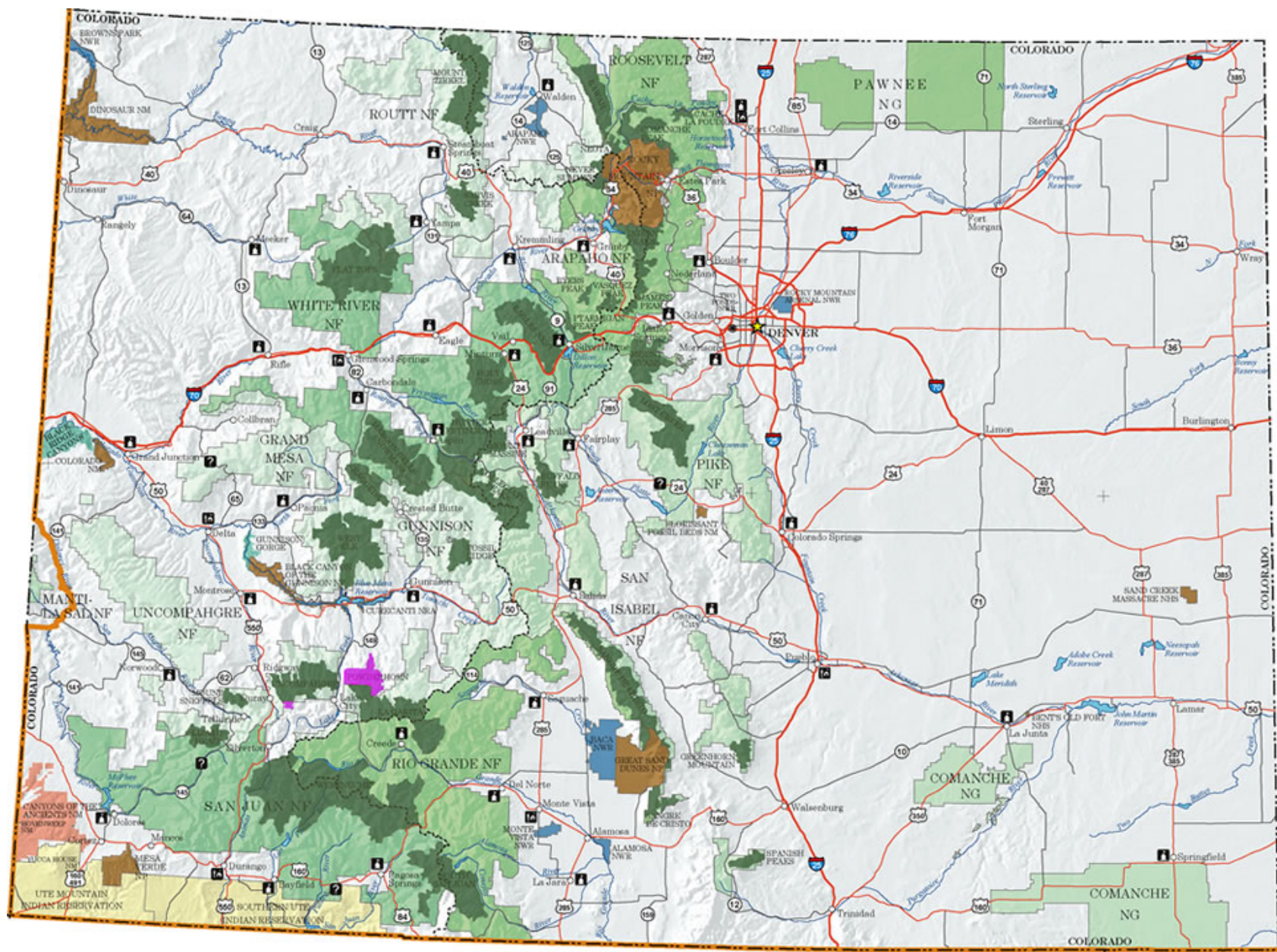
- **Target:** *Bumblebees*
- **Importance to Food & Agr:** Pollinators of wild and domestic plants. One of the easiest bees to recognize due to their size and “bumbling” movements.
- **Issues:** Many species rare and endangered, so reports from Citizen Scientists are very helpful to scientists. Pesticides and habitat loss are threats.
- **Observing Options:** Species and arrival/departure relative to blossoming time of crops.
- **Citizen Science:** [Bumblebee Watch](#) helps you identify species in photos you send in which are used to track rare and threatened species.
- **Resources:** Bumblebee Watch website above and [Xerces Society](#).











Farm to Institution in SW Colorado

- 1) Farm to Institution (FTI) offers solid opportunities for producers of various scales.
- 2) FTI can create a critical mass of demand to support distribution to smaller rural communities.
- 3) Sustainability of production practices, producer viability, and of purchasing are the keys to a better future.





www.healthycommunityfoodsystems.org

www.HCFS.org

jadyer@frontier.net