



WASHINGTON STATE UNIVERSITY
PROGRESS CALLED FOR BY FAITH

Nebraska
University of Nebraska-Lincoln

IOWA STATE UNIVERSITY
University Extension

NRCS

PURDUE UNIVERSITY

UC DAVIS

Virginia Tech

OSU
Oregon State University

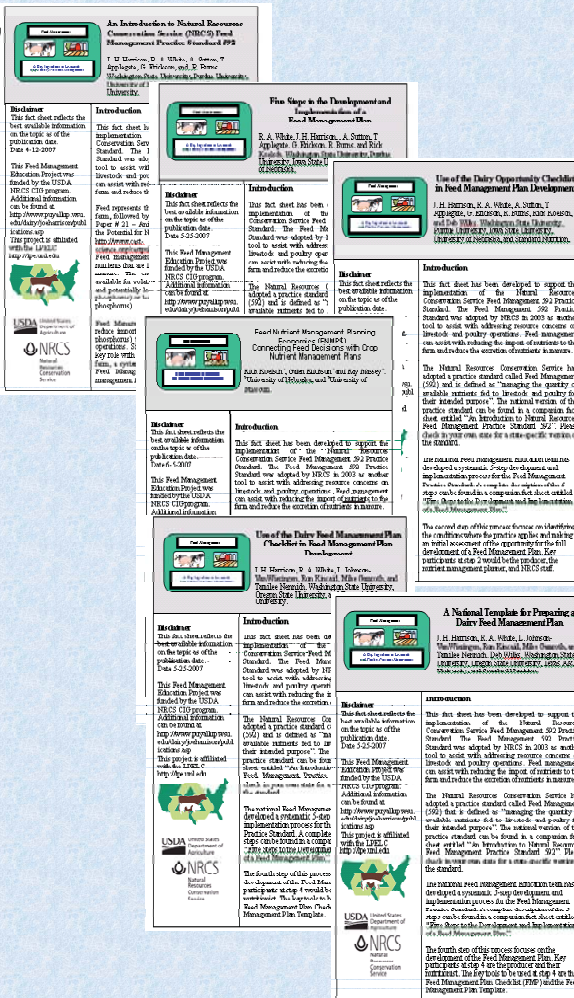
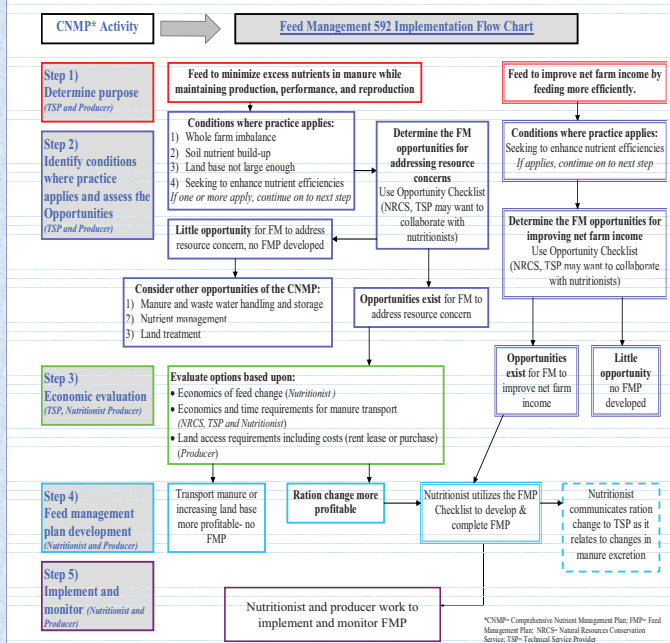
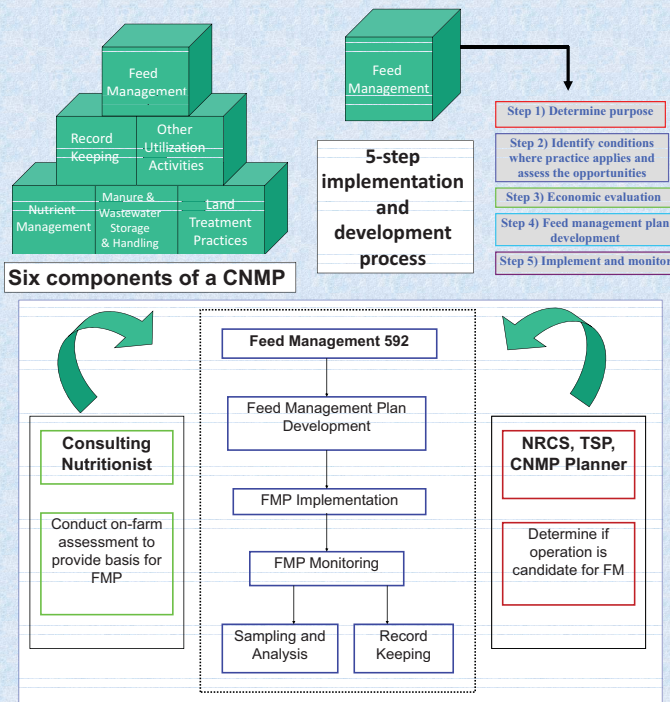
Cornell University

UNIVERSITY OF MISSOURI
Extension

University of Idaho
THEODORE CHASE ENDOWMENT

Texas Cooperative
EXTENSION
The University of Texas at Austin

- 1) develop educational materials that are applicable at the national level,
- 2) provide training for NRCS staff, agricultural professionals, and technical service providers (TSPs) in feed management concepts and practices that minimize import of nutrients to the farm,
- 3) provide training in the use of computer models and software for strategic ration balancing, whole farm nutrient balance, and nutrient excretion estimates based upon feed and animal performance inputs, and
- 4) develop a chapter for the NRCS Agricultural Waste Management Field Handbook (AWMFH) on Feed Management.



Location of Fact Sheets

<http://www.puyallup.wsu.edu/dairy/nutrient-management/publications.asp>

Location of Electronic Tools

<http://www.puyallup.wsu.edu/dairy/nutrient-management/software.asp>

Director: Joe Harrison – jhharrison@wsu.edu - Washington State University
Project manager: Rebecca White – rawhite@wsu.edu - Washington State University